

# INTERIOR DESIGN

collage  
design 

Architecture. Interiors. PMC

# LEADING WITH EXPERTISE



We share and develop ideas to ensure futureproof, responsible architecture. It is the expertise of our team, their experiences and knowledge in designing that have earned us strength and recognition over the past decade. We are experts in creating awareness, and our enthusiasm for innovation has kept us at par with the leading architects of the world.

## RAISING ASPIRATIONS WITH INNOVATION

We immensely value our clients, fellow consultants, contractors and suppliers. It has been our foremost priority to maintain a healthy ongoing dialogue and develop close working relationships. Together we have helped our clients realize their aspirations with surprisingly affordable designs. We seek to arrive at simple yet rich solutions in an unpretentious and contemporary manner.

- ARCHITECTURE
- INTERIORS
- ENGINEERING
- LANDSCAPE DESIGN
- INTERIOR DESIGN
- PROJECT MANAGEMENT
- COST CONSULTING
- FEASIBILITY STUDIES
- PROGRAM MANAGEMENT
- EPC

## CRAFTING DYNAMISM

Collage Design was founded in 1996 in Mumbai, and has been growing steadily ever since. Our work encompasses a wide spectrum of project types.

- MASTER PLANNING
- SPORTS & EVENTS
- RESIDENTIAL
- COMMERCIAL
- INSTITUTIONAL
- INFRASTRUCTURE
- RESEARCH
- INDUSTRIAL
- INTERIORS
- RETAIL





# PROJECT LIST

PROPOSALS, ONGOING & COMPLETED WORKS

## ◉ INTERIORS ◉ RETAIL

TECHINT, Mumbai

Sun Pharma, Vadodara

Elster Metering, Mumbai

Schlumberger, Mumbai

Tata Capital, Mumbai

VIP, Pan India

Delsey, Mumbai

Carlton

Stephen Brothers

Reliance Foot Print, Pan India

Reliance Digital, Pan India

Reliance Wellness, Pan India



# INTERIOR LITTLE SURPRISES







We design spaces that reflect our clients' brand, values and business objectives. We take an architectonic approach to designing interior space by considering design from a volumetric and planning perspective. On all of our projects we apply our in-depth knowledge of finish materials, detailing, color, lighting, furnishings and decorative components to produce a holistic and cohesive design. We design spaces that reflect our clients' brand, values and business objectives. Whether the goal is to improve the quality of the work place, to increase the public awareness of the brand, to generate foot traffic or to boost revenue, we design to meet these outcomes.





**TECHINT**

THANE, MAHARASHTRA

<b>Client</b>	TECHINT
<b>Development Area</b>	45,000 Sq.ft
<b>Project cost</b>	INR 6.5 Cr
<b>Status</b>	Completed
<b>Scope</b>	Interior Design Project Management EPC

DESIGNAGE

The office space is divided into three principal zones, which helps to maximize the efficiency of the work process considering the specifics of business and corporate policy. The front area includes a reception zone, lounge area and an Innovative Center which is used for conference and training purpose for 25 persons in addition to a number of meeting rooms. The specific character of work processes involve intensive and frequent use of meeting rooms that are actively involved, not just in the event of meetings and conferences, but also in the daily work routine. The back Office, with 500 working desks and cabins, is mixed with a number of “focus” rooms (that are specific for this business) flexible meeting and work soft areas and play zones.

INTERIORS





## SUN PHARMA

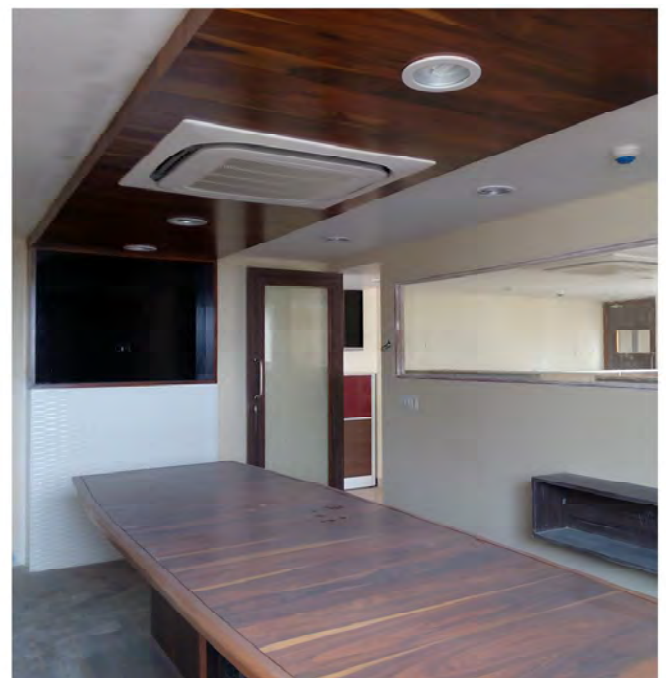
BARODA, GUJRAT

<b>Client</b>	Sun Pharmaceutical
<b>Development Area</b>	18,000 Sq.ft
<b>Project cost</b>	INR 5.4 Cr
<b>Status</b>	Completed
<b>Scope</b>	Interior Design Project Management

DESIGNAGE

INTERIORS

Spread across 9 storeys, this new office and laboratory for one the leading pharmaceutical company in the world creates a cohesive work environment for the various departments and research wings housed within this renovated building. All of the work areas are bright and comfortable, involved corporate branding and colors are clean and crisp, applied finishing materials and furniture have high quality specifications and are environmental friendly. All of this follows and conforms specific design guidelines of the company while creating unique identities for each floor. The overall layout and design features are not only decorative but also functional, meeting the high standards of design for research and development.







**IIT-IDC**

IIT, MUMBAI

<b>Client</b>	Indian Institute of Technology
<b>Development Area</b>	4,500 Sq.ft
<b>Status</b>	Completed
<b>Scope</b>	Interior Design Project Management

DESIGNAGE

INTERIORS







## IIT-LABS CLASSROOMS & OFFICES

IIT, MUMBAI

Client	IIT - MAMBAI
Development Area	70,000 sq.ft. Multiple Projects.
Status	Completed
Scope	Interior Design

DESIGNAGE

INTERIOR | INSTITUTIONAL





**DATAMATICS**

ANDHERI, MUMBAI

<b>Client</b>	Datamatics Financial Services Ltd
<b>Development Area</b>	15,000 sq.ft.
<b>Status</b>	Completed
<b>Scope</b>	Interior Design Project management

DESIGNAGE

INTERIORS







E-NXT

DEONAR, MUMBAI

Client	TATA Capital
Development Area	15,000 sq.ft.
Status	Completed
Scope	Interior design

DESIGNAGE

INTERIORS







ITS

TALOJA, MAHARASHTRA

Client	ITS
Development Area	6000 sq.ft.
Status	Completed
Scope	Interior Design Project Management

DESIGNAGE

INTERIORS







## NIIT, ADMINISTRATIVE BUILDING

WARANGAL, TELANGANA

Client	NIIT Warangal
Development Area	30,000 Sq.ft
Status	Completed
Scope	Interior Design Project Management

DESIGNAGE

INTERIORS





**ABB**

ANDHERI, MUMBAI

<b>Client</b>	ABB Ltd.
<b>Development Area</b>	15,000 sq.ft.
<b>Status</b>	Completed
<b>Scope</b>	Interior Design Project Management

DESIGNAGE

INTERIORS







**ELSTER METERING**

MUMBAI, MAHARASHTRA

<b>Client</b>	ELSTER METERING PVT. LTD.
<b>Development Area</b>	5,000 Sq.ft
<b>Status</b>	Completed
<b>Scope</b>	Interior Design Project Management

DESIGNAGE

INTERIORS







TATA CAPITAL

THANE, MUMBAI

Client	Tata Capital
Development Area	60,000 Sq.ft
Status	Competition

DESIGNAGE

INTERIORS







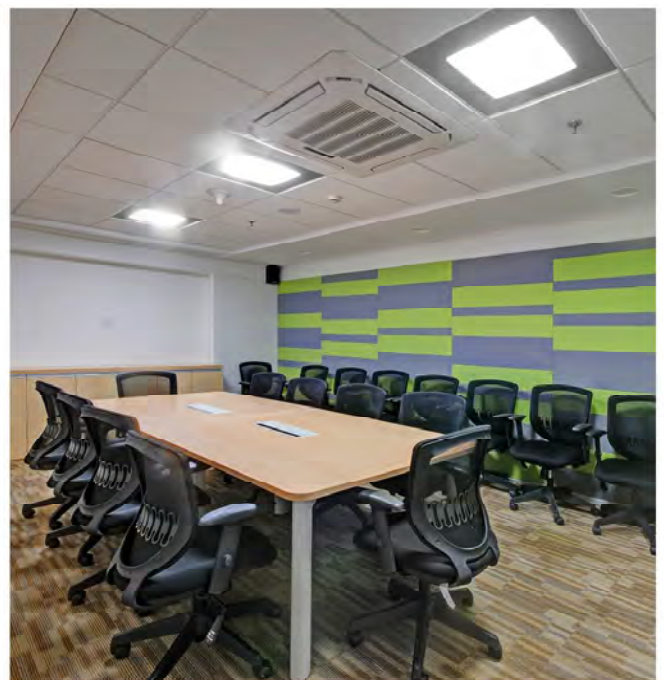
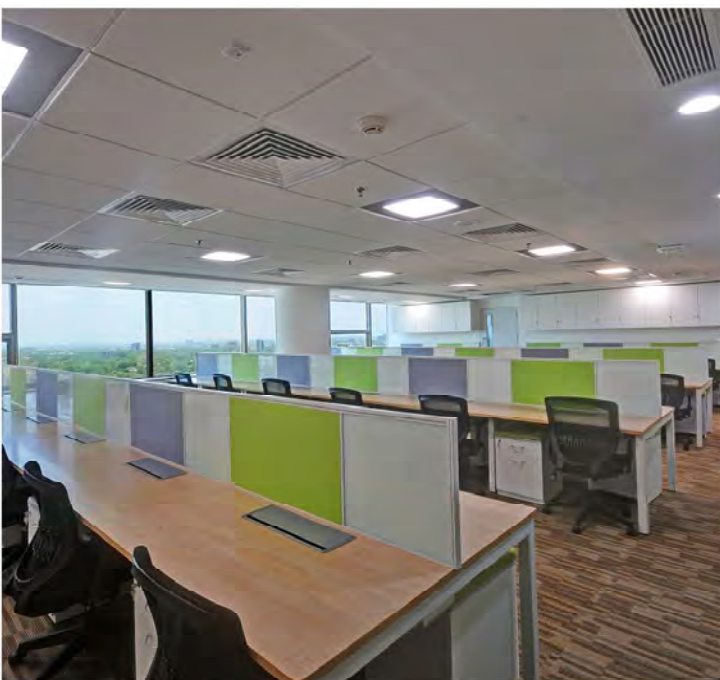
**SCHNEIDER**

AHMEDABAD, GUJARAT

Client	Schneider
Development Area	5,600 Sq.ft
Status	Completed
Scope	Execution

DESIGNAGE

INTERIORS







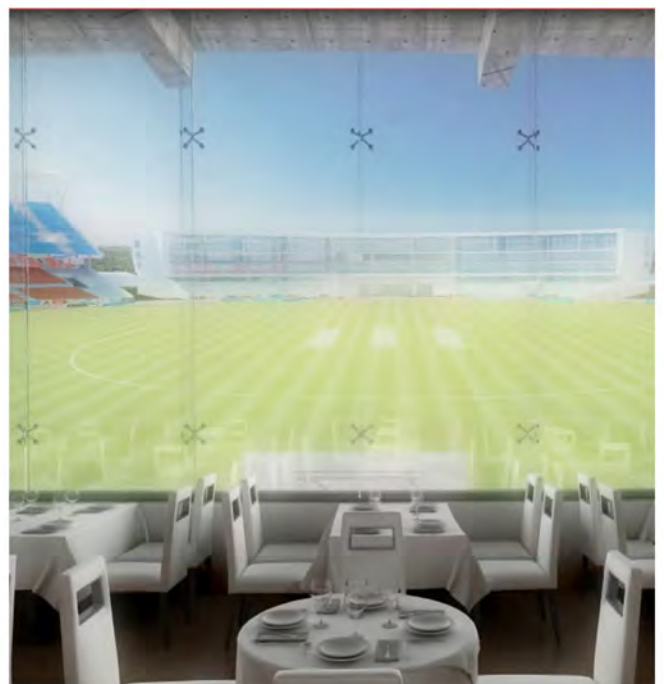
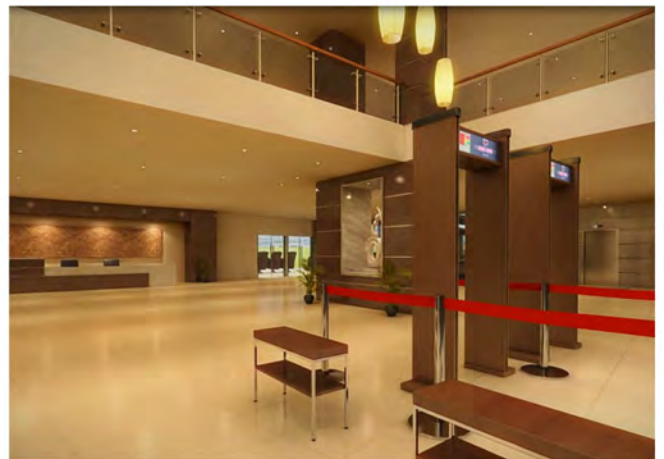
# TRIVANDRUM INTERNATIONAL STADIUM

KARYAVATTOM,  
KERALA

<b>Client</b>	KSFL
<b>Development Area</b>	80,000 sq.ft.
<b>Status</b>	Completed
<b>Scope</b>	Interior Design Project Management

DESIGNAGE

INTERIORS



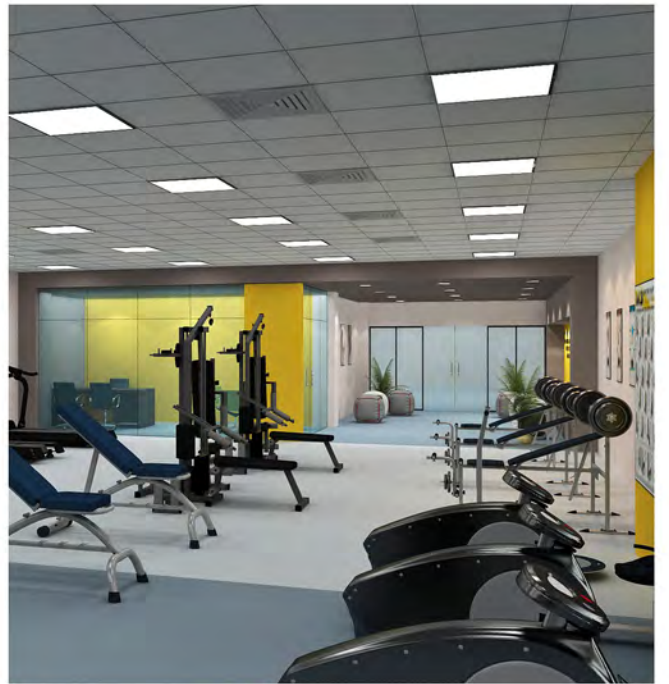




**IGICS CRICKET STADIUM** Haldwani, Uttarakhand

<b>Client</b>	IGICS- Govt. of Uttarakhand
<b>Development Area</b>	30,000 sq.ft.
<b>Status</b>	Under Construction
<b>Scope</b>	Interior Design Project Management

DESIGNAGE INTERIORS







## DEHRADUN CRICKET STADIUM & CLUB HOUSE

DEHRADUN,  
UTTARAKHAND

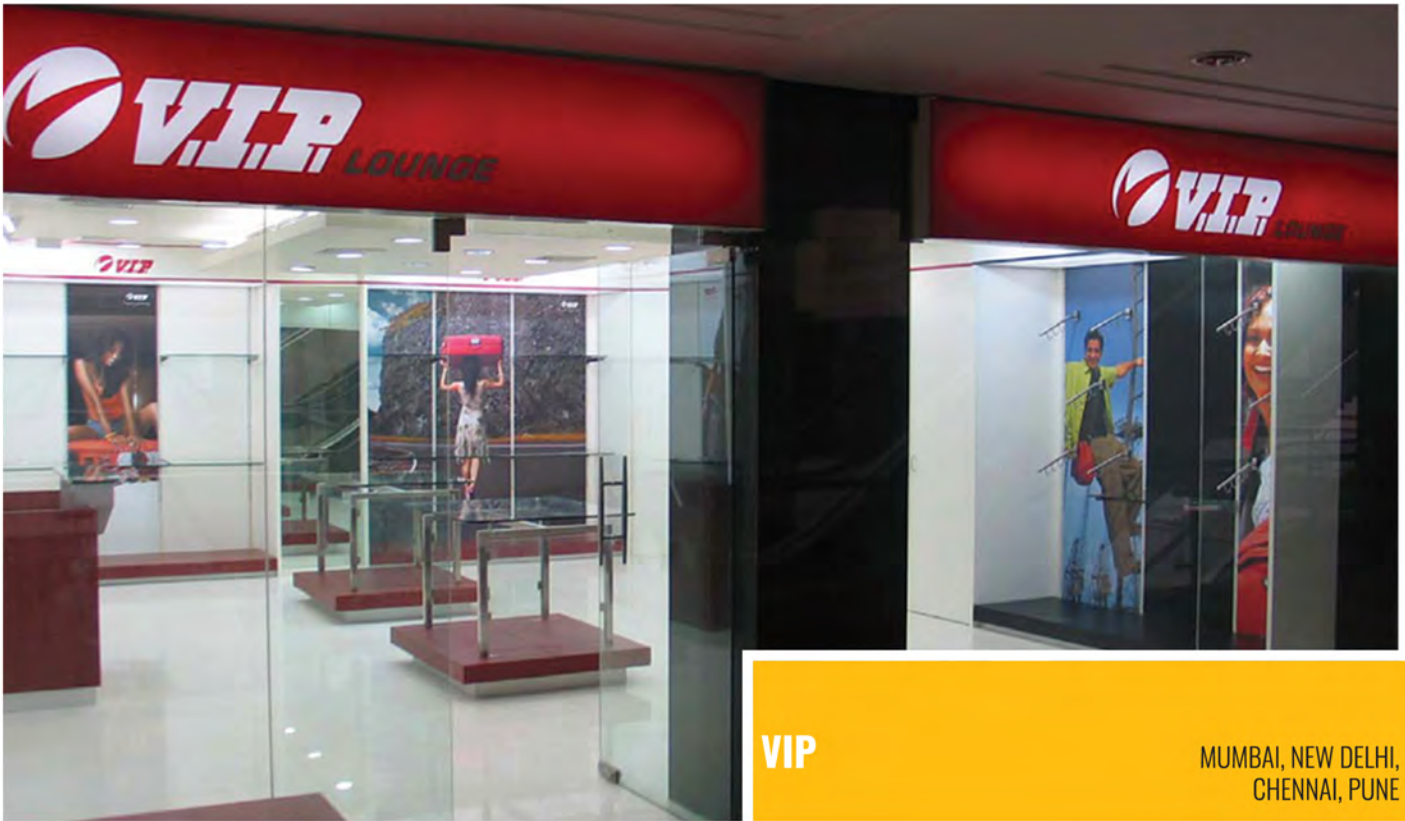
Client	RGICS- Govt of Uttarakhand
Development Area	1,20,000 sq.ft
Status	Completed
Scope	Interior Design Project management

DESIGNAGE

INTERIORS



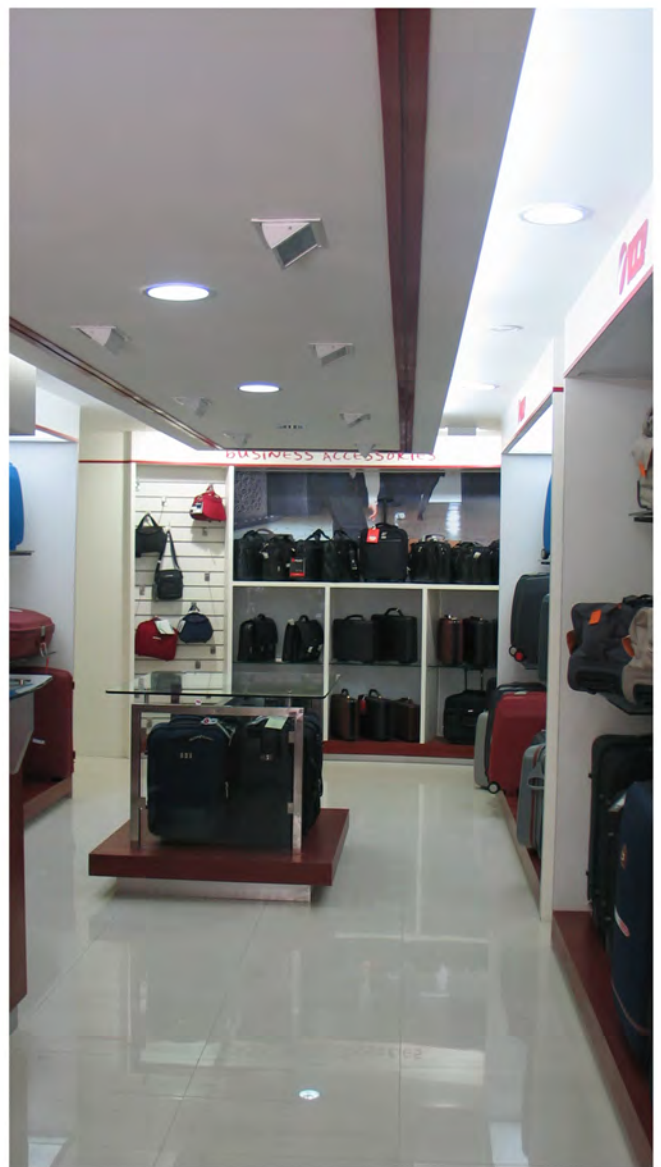




**VIP** MUMBAI, NEW DELHI, CHENNAI, PUNE

Client	VIP Industries
Development Area	Varies
Status	Completed
Scope	Interior Design Project Management EPC

DESIGNAGE INTERIORS







**RELIANCE FOOTPRINT** Bangalore, Hyderabad, Kochi, Mumbai, Noida

Client	Reliance Industries
Development Area	Varies
Status	Completed
Scope	Retail Design Manual Interior Design Engineering

DESIGNAGE INTERIORS







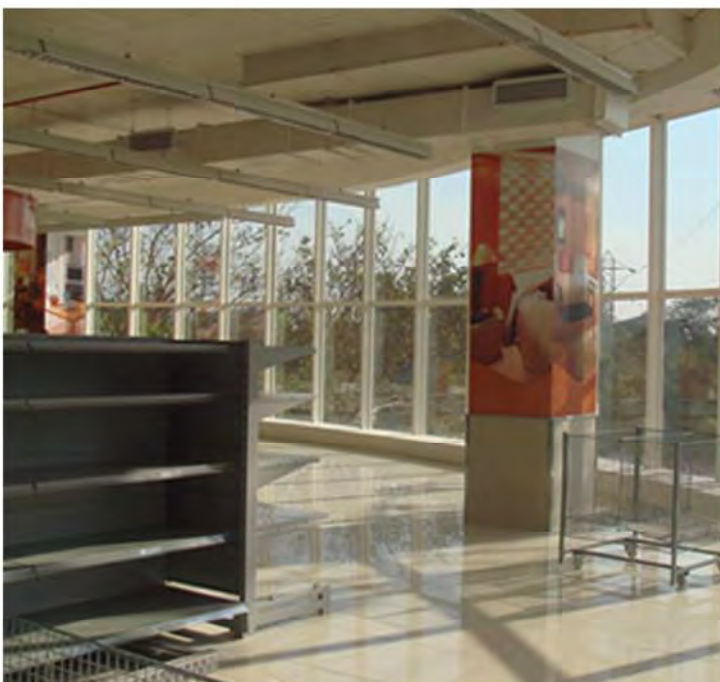
**RELIANCE HYPER**

MUMBAI, MAHARASHTRA

<b>Client</b>	Reliance Industries
<b>Development Area</b>	Varies
<b>Status</b>	Completed
<b>Scope</b>	Interior Design Engineering

DESIGNAGE

INTERIORS







## CARLTON

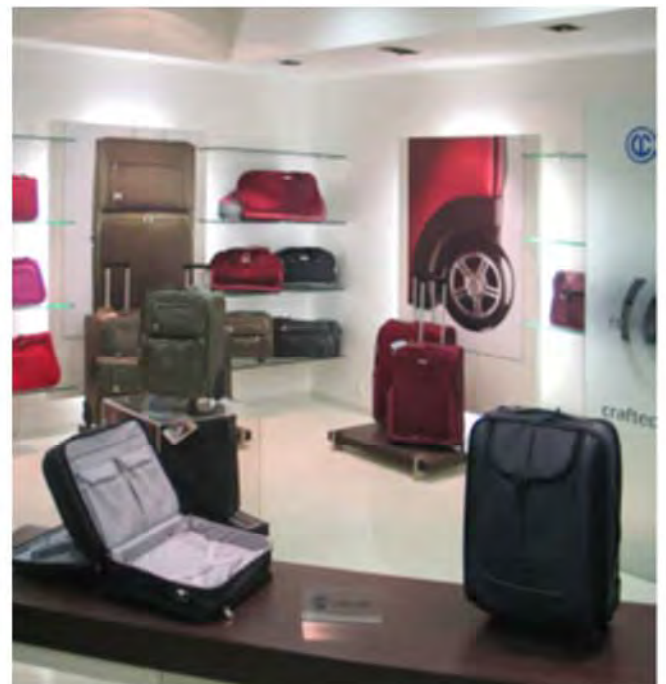
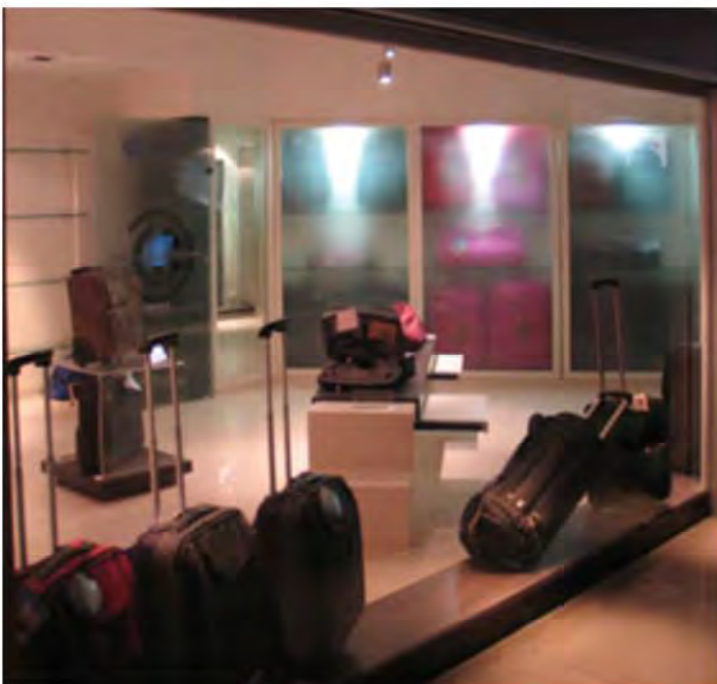
MUMBAI, DELHI,  
MILAN, SINGAPORE,  
AMSTERDAM, DUBAI

<b>Client</b>	VIP Industries
<b>Development Area</b>	Varies
<b>Status</b>	Completed
<b>Scope</b>	Retail Design Manual Prototyping Interior Design EPC

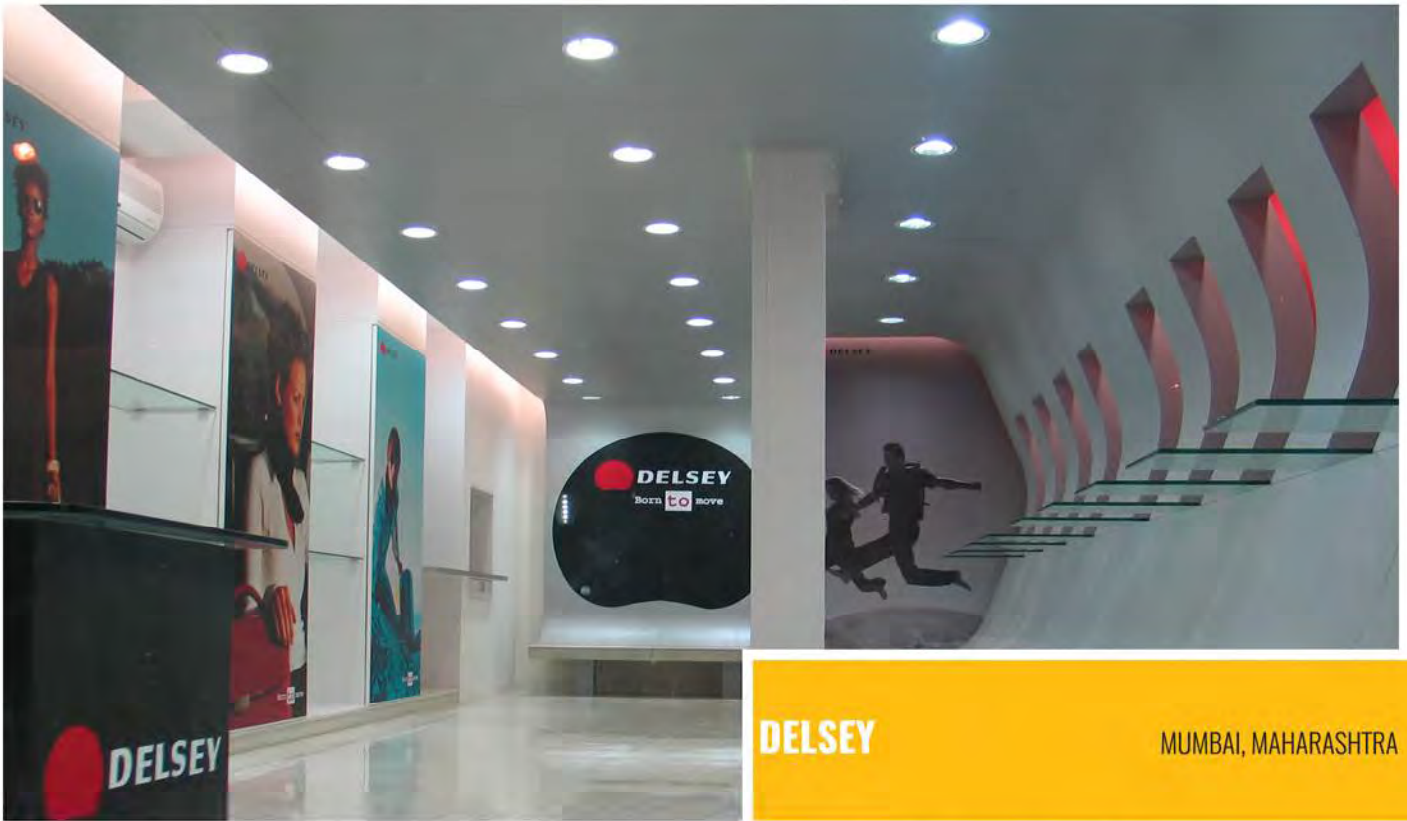
DESIGNAGE

INTERIORS

The practice, with its in-depth experience of creating environmentally-friendly retail facilities that exemplify the five key challenges of retail: attraction, retention, ease of use, integration and revenue, has developed the retail identity and store design for one of the leading luggage brand in the world. With stores across Asia and Europe, the design was developed to address the unique challenges of each retail spaces and providing multiple configurations for adapting the design and layout. The display units were fabricated in India and shipped across various locations requiring extensive detailing to achieve efficiency and reduced freight costs without compromising on the finishing and display.







**DELSEY**

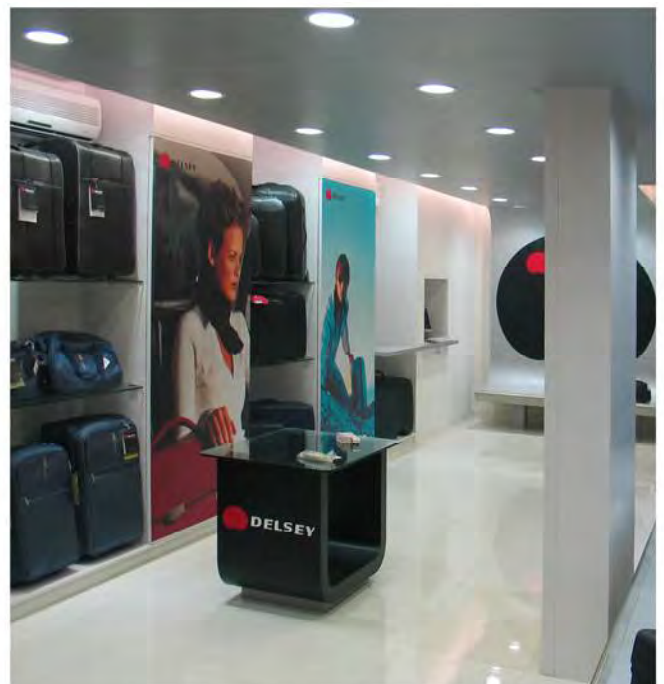
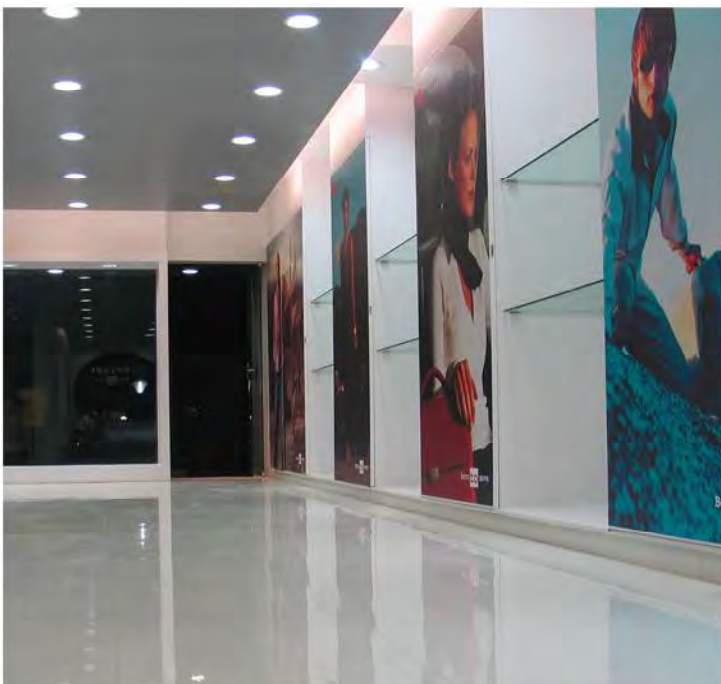
MUMBAI, MAHARASHTRA

<b>Client</b>	VIP Industries
<b>Development Area</b>	4,000 Sq.ft
<b>Status</b>	Completed
<b>Scope</b>	Interior Design Project Management EPC

DESIGNAGE

INTERIORS

The design for the new Delsey store in Mumbai is a combination of mainstream and offbeat, creating a unique environment where colors and subtleties abound to make shopping an exhilarating experience. The soft and sensual curve created by the linear display of the undulating shelves provides warmth and playfulness to this international luggage brand. Because of the store's great need for storage capabilities, the design had to maximize and enhance the center's storage facilities without overwhelming the space. Inspired by the brands logo, products and material, the design managed to maximize on the extent of display of large size products within this compact store to provide flexibility of display and demonstration to the customers.





# OUR PROFILE

## DIRECTORS' PROFILES

**NITIN CHAVARKAR**, Director

Nitin studied Architecture in Mumbai at Sir J.J. School of Architecture and co-founded the firm in 1996. He is constantly challenging and perfecting specifications of even the smallest aspects of the project, ensuring great detailing at every level that ensures high quality design. He has strong technical skills and his commitment to quality, solid research and perfection is a significant part of the DNA of Collage Design.

**AMOL MAHAJAN**, Director

Amol studied Architecture in Mumbai at Sir J.J. School of Architecture and with more than 23 years in the field, he leads the design team. He is an architect of the curious, investigative kind. He prefers to approach architectural challenges with the attitude of an inventor and he finds his inspiration and gratification in technical innovation and experimenting with materials and forms and these are the characteristics he fosters in the firm's working.

**JAYSHIL PATEL**, Director

Jayshil Patel studied Civil Engineering in Gujarat at Nirma Institute of Technology. He has more than 15 years of rich experience in Engineering & Project Management. Mr. Patel's proficiency lies in providing leadership and direction for Project strategy, execution and competitive service delivery in a fast changing environment. He has successful experience in projects complying with International cost effective standards of quality, safety & time.

**RAMKUMAR SUBRAMANIAN**, Director

Ramkumar studied Architecture in Mumbai at Sir J.J. School of Architecture with Amol and Nitin. Having worked with leading International design firms across USA and Europe, he has been involved in the planning, design and construction of landmark projects across the globe over the past 23 years. He has a very clear understanding of the technical and operational challenges involved in the planning and design of large-scale projects.

## THE TEAM

Aditya Sovani

Ajay Dhumal

Ajinkya Deshmukh

Anil Mandrai

Anvay Bhandari

Bijal Dhruv

Chandrakant Lokhande

Dhanashri Chaudhari

Dinesh Awate

Dnyaneshwar Kesarkar

Gaurang Joshi

Harshita Vaiti

Jacquina Fernandes

Jaidev Kaundal

Kavita Malgaonkar

Lalit Joshi

Mandar Mahajan

Manohar Palandurkar

Mukund Navkar

Neelima Dharkar

Pravin Lad

Pritha Arebail

Rahul Suryawanshi

Raju Jadhav

Richa Sharma

Rupesh Bramhane

Sachin Dhanawade

Sachin Gaikwad

Sanjay Yadav

Santosh Prasad

Satyendra Rana

Sheeba Bright

Sooraj Mahalgawey

Suchita Amar Jiggini

Sudhanshu Kotian

Sushil Rane

Tenzin Dasang

Umakant Gautam

Uttam Vishwakarma

Vijay Chaudhari

Vinay Shinde

Vipul Kotkar

Vishnu Karande

Vrshali Chougale

Yogesh Mane









300, SAI SAMPANNA, VIKHLORI STATION ROAD,  
VIKHLORI EAST, MUMBAI - 400083  
Tel: +91 22 25740844 / 45  
E-mail: info@collagedesign.net  
Web: www.collagedesign.net

